

Affiliated to



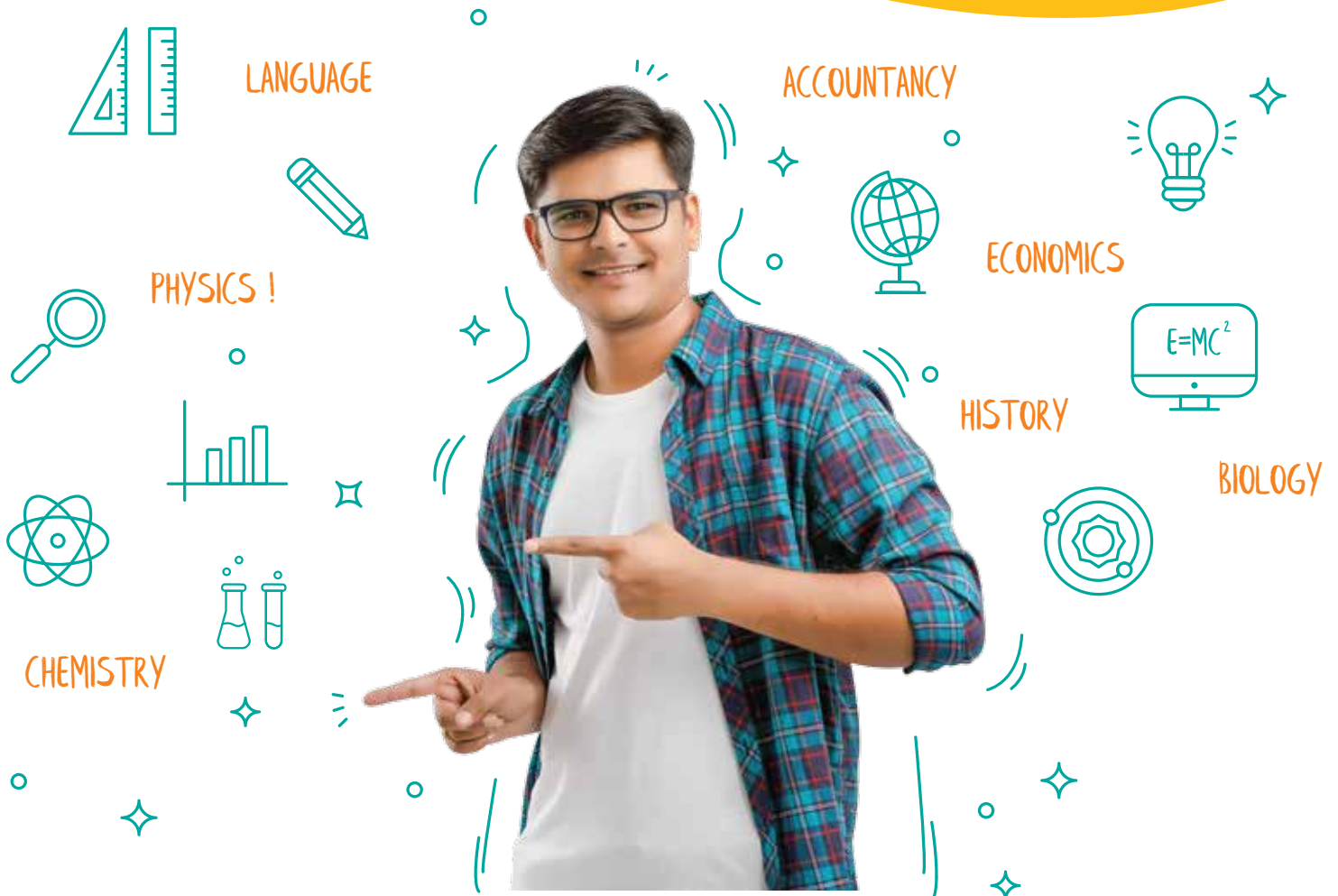
Maharashtra State Board

INDEX NO.: J11.10.016
U-DISE NO.: 27251006729



AKEMI JUNIOR COLLEGE OF ARTS, COMMERCE & SCIENCE

Explore the Infinite Possibilities



www.akemi.edu.in

EDUCATE. EMPOWER. ENLIGHTEN.

Let's make the new age change you so desire happen as an ensemble!



Akemi Group of Institutes

Here to open doors and support your choices while giving you the freedom and resources to chase your dream career since 2011. By knocking down the walls between departments and class structures, and uniting the potential of real experiences, informal talks and discussions, human collaboration can flourish. Let's realize the exponential power of our collective.

From the Principal's Desk



Prof. Vinit Karande
Principal

Holistic approach towards your future !

We, at Akemi Junior College of Arts, Commerce & Science believe that the purpose of education is to turn mirrors into windows, and as such are focused not only on academics but also on providing an opportunity to each student to explore his or her capabilities in their area of interest - curricular, co-curricular or extra-curricular. We aim to develop soft skills that will equip them to manage and lead varied opportunities and challenges of today's society with an added edge.

We undertake the best practices in pedagogy with the perfect combination of teaching experience of the faculty members and technology. We believe that complete development of a student into a holistic person requires active participation of their parents as well. Thus the institution is in constant touch with every parent, and informs them about the performance of their ward through correspondence and dialogues.

Kick-start your Journey with Akemi !

Subjects offered in 11th & 12th:

SCIENCE	COMMERCE	ARTS
Physics	Economics	Economics
Chemistry	Book-keeping & Accountancy	Logic
Mathematics	Secretarial Practice / Mathematics	Sociology / Mathematics
Biology/ Geography	Organization of Commerce & Management	Psychology / Political Science
EVS	EVS	EVS
English	English	English
Physical Education	Physical Education	Physical Education
German/ Marathi / Information Technology	German/ Marathi / Information Technology	German/ Marathi / Information Technology

Uniqueness of Akemi Junior College:



IT Training

- Well Equipped Computer Labs
- Essential Training programs for future studies



Preparation & Guidance for Competitive Exams

- JEE Main / JEE Advanced / Medical entrance
- CA / CS / CMA / Banking / Insurance / Mutual funds
- UPSC / MPSC / IBPS



Co-Curricular Activities

- Educational Field trips
- Regular Seminars & Guest lectures
- Sports Events & competitions
- Cultural Activities



Language Lab

- English pronunciation & vocabulary
- Effective communication skills for career growth



Rigorous Academics & Expert Faculty

- Weekly Tests & feedback
- Competitions for in-depth understanding of subjects
- Use of Computers for presentations
- Well qualified & experienced faculty

A World of Opportunity Awaits You at Akemi !



Fresher's Party



Sports



Cultural Activities



College Events

Leadership Programmes



Industrial Visits



Your start to an elevated career. Don't look in any direction but ahead.

Akemi Junior College is a direct pathway to your favored career, we provide students with an experience that supports successful transition to further studies like NEET & JEE for Science, CA & CS for Commerce and UPSC & MPSC for Arts.

Features that make us stand out:

> Interdisciplinary Approach

> Competitive Atmosphere

> Creative Teaching Methodologies

> Informal talks and Discussions

> Integrated Education

> Focus on Real-life Experiences

State-of-the-art Infrastructure

Akemi campus is strategically located in Pune and is aesthetically designed to create a unique ambience. The Modern Infrastructure of our campus includes Classrooms which are equipped with Audio Visual aids, well equipped Science Laboratories, Computer Labs and exhaustive Library make learning interesting for students. The Outdoor & Indoor Sports facilities, Library, and Cafeteria take care of the Physical & Mental health of the students in our large campus where they are surrounded by greenery !



We've got the precautions for your health & safety covered as & when traditional learning returns!

Blended Learning Ecosystem at Akemi

Our faculty is trained for teaching - learning, assessment and student counselling using the two popular digital ecosystems of Google and Microsoft.

A. Google Suite for education: Gmail, Google Docs, Google Slides, Google Sheets, Google Forms, Google Calendar, Google Classroom, Google Meet, Google Drive, You Tube, Blogger

B. Microsoft Ecosystem: Microsoft Word, Microsoft PowerPoint, Microsoft Excel, Microsoft Outlook, Microsoft Teams, Microsoft OneNote, Skype, LinkedIn, etc.

C. Digital learning resources

Key benefits to students:

- ▶ Pick real world skills for the workplace
- ▶ Master difficult concepts at your own pace
- ▶ Multi-Dimensional Learning
- ▶ Collaborative & Customised Learning
- ▶ Appear for Multiple Practise Exams
- ▶ Organise yourself better for productivity

Our Knowledge Partners



ASSOCIATE CERTIFIED ANALYTICS PROFESSIONAL

Student Academy Program



Tableau



Admission Procedure

1.) Admission Form, College Brochure to be obtained.

2.) Admission Process :

- Admissions to Std XI shall be done on merit basis & eligibility criteria as per the Maharashtra State Board.
- Students passing Std X examination of Maharashtra State SSC Board or an equivalent examination (qualifying examination) are eligible for admission to FYJC. Marks scored in this examination shall be the criteria for admission to FYJC.

3.) Documents required:

For admission to XI / XII Std., following documents are required to be submitted at the time of admission. X/XI Marksheet Photo Copy, Original School Leaving Certificate, Migration Certificate (for other boards), Caste Certificate, Address Proof, Photo Id proof, 2 Recent Passport size photographs. Attested copies of all relevant/ aforementioned documents need to be submitted at the time of admission.

4.) For International students, admission will be confirmed once documents are verified.



“

Education is the passport to the future, for tomorrow belongs to those who prepare for it today.”





We're just a tap away !

Click on the icons & get in touch with us.



77966 90200



77966 90300



admissions.ajc@akemi.edu.in



www.akemi.edu.in



@akemijrcollege



**Akemi Knowledge City, Sr. No. 30/3/1, 30/4/A, 30/4/B, Akemi Road,
Off Mumbai Pune Highway, Marunji Road, Pune 411 057**